

ERA 2012 Outcomes

This paper refers to four digit Fields of Research (FoRs) only throughout.

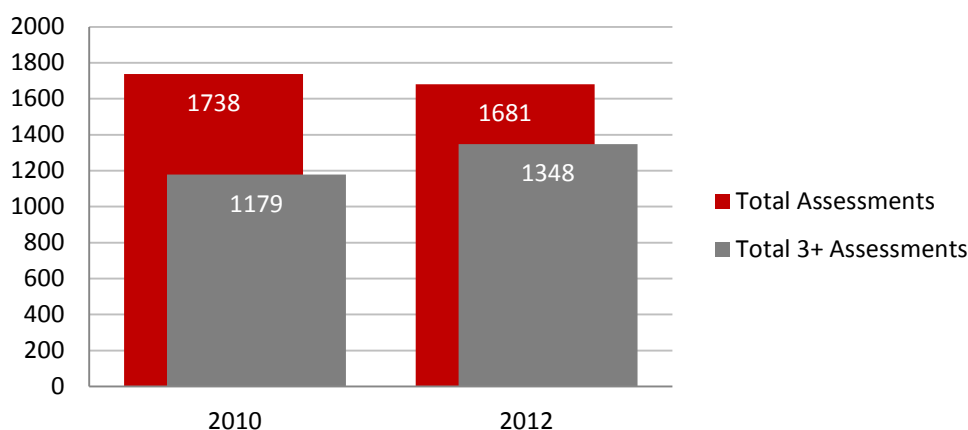
The cluster framework for ERA 2012 was slightly different to that used in 2010. This document applies the 2012 framework in all cases to aid comparison.

Overall Outcomes

For all 41 participating institutions, a total of 1681 assessments were made at the 4 digit level. This is 3% less than the 1738 assessments in 2010.

Assessments at world standard and above (3+) increased by 14% to 1348. As a result, the proportion of assessments at world standard and above increased from 68% in 2010 to 80% in 2012.

Chart 1 - ERA 2010 and 2012. Total Assessments.



The most significant increase was for assessments at level 5, up 29% to 308. Assessments at levels 3 and 4 also increased by 7% and 16% respectively. The number of level 1 assessments fell substantially, down 61% to 67.

Chart 2 - ERA 2010 and 2012. Total Assessments by Rating.

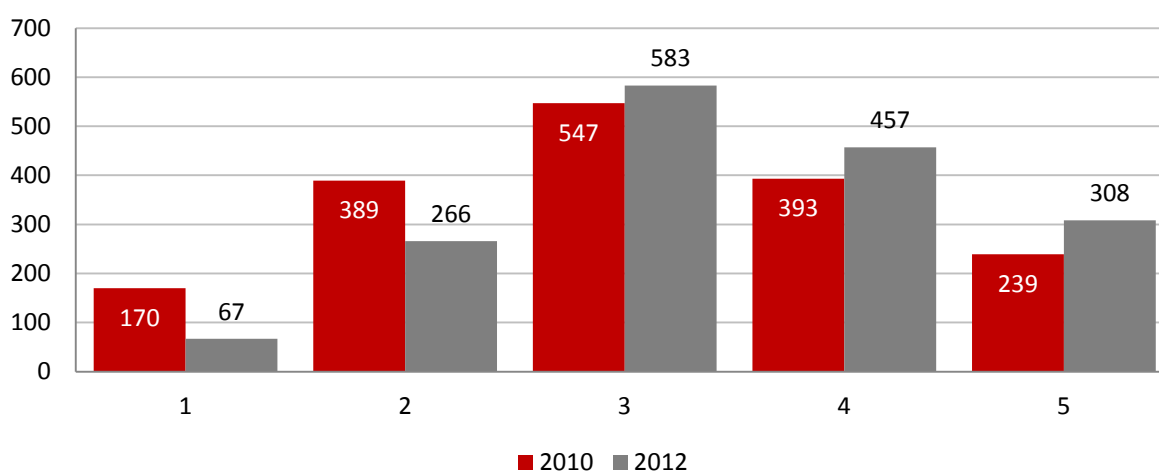
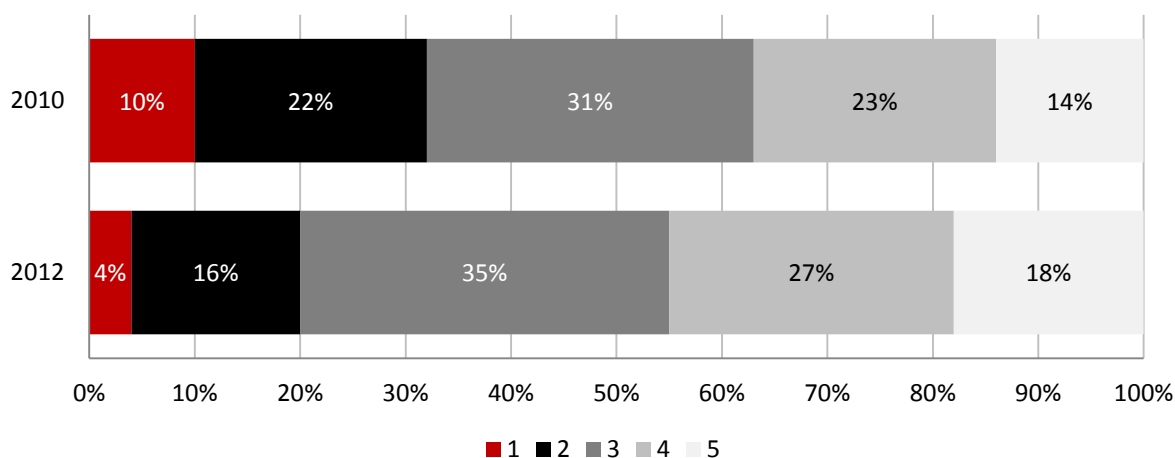


Chart 3 – ERA 2010-2012. Distribution of Ratings.



Outcomes by University Grouping

Overall, IRU members accounted for 16% of all fields rated as world standard or above. IRU members accounted for 14% of all ratings of well above world standard, a significant increase over 2010 (8%).

Table 1 – ERA 2012 Outcomes – IRU.

Provider	Fields of Research (FoRs) Ratings			FoRs assessed	FoRs rated 3 or above	% FoRs rated 3 or above
	5 - Well above world standard	4 - Above world standard	3 - At world standard			
Charles Darwin University	1	3	6	14	10	71%
Flinders University	3	5	21	39	29	74%
Griffith University	1	11	26	60	38	63%
James Cook University	3	11	19	50	33	66%
La Trobe University	9	7	22	53	38	72%
Murdoch University	7	5	16	33	28	85%
University of Newcastle	18	9	17	49	44	90%
IRU TOTAL	42	51	127	298	220	74%
IRU % of Sector	14%	11%	22%	18%	16%	
SECTOR TOTAL	308	457	583	1,681	1,348	80%

The tables below refer to the following university groupings:

- IRU Innovative Research Universities
- Go8 Group of Eight
- ATN Australian Technology Network
- RUN Regional Universities Network

The 'Ungrouped' category refers to the 15 institutions who are not a member of the networks above.

The average number of assessments per network member was generally unchanged, except for the Go8 where it fell from 88.4 assessments per institution to 82.8. It was this that largely drove the fall in total assessments in 2012. The Go8 average of 82.8 assessments per institution was still higher than for any other grouping (IRU 42.6; ATN 44.0; RUN 13.8; Ungrouped 27.9).

The proportion of total assessments at 3 and above was highest for the Go8 (98% of all assessments). This ratio increased for all networks, most significantly for the ATN, where it increased from 61% in 2010 to 84% in 2012.

Table 2 – ERA 2012 Outcomes by Grouping.

Provider	Fields of Research (FoRs) Ratings			FoRs assessed	FoRs rated 3 or above	% FoRs rated 3 or above
	5 - Well above world standard	4 - Above world standard	3 - At world standard			
IRU	42	51	127	298	220	74%
Go8	207	268	175	662	650	98%
ATN	13	68	103	220	184	84%
RUN	7	3	19	83	29	35%
Ungrouped	39	67	159	418	265	63%
SECTOR TOTAL	308	457	583	1,681	1,348	80%

Chart 4 - ERA 2012 Assessments by Grouping.

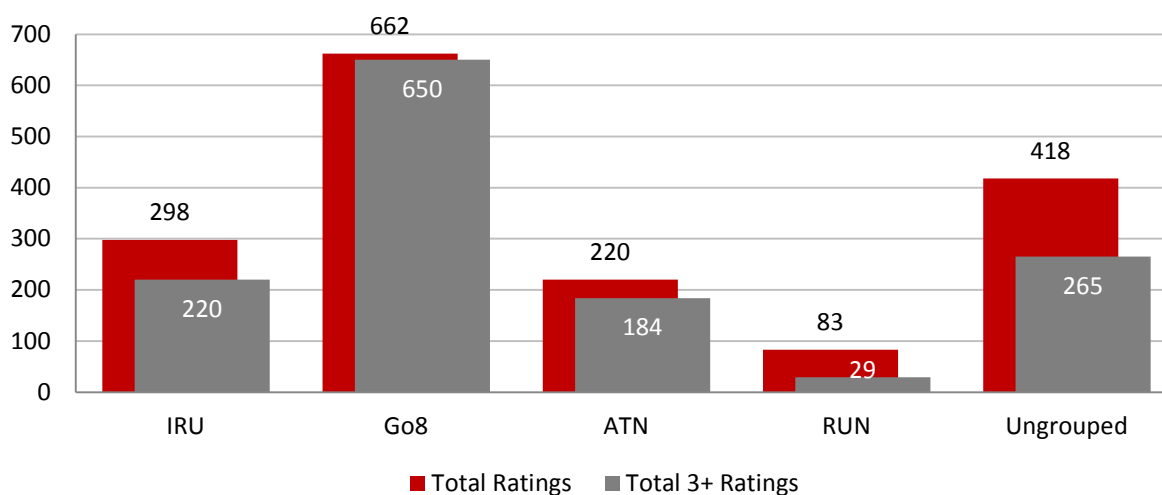
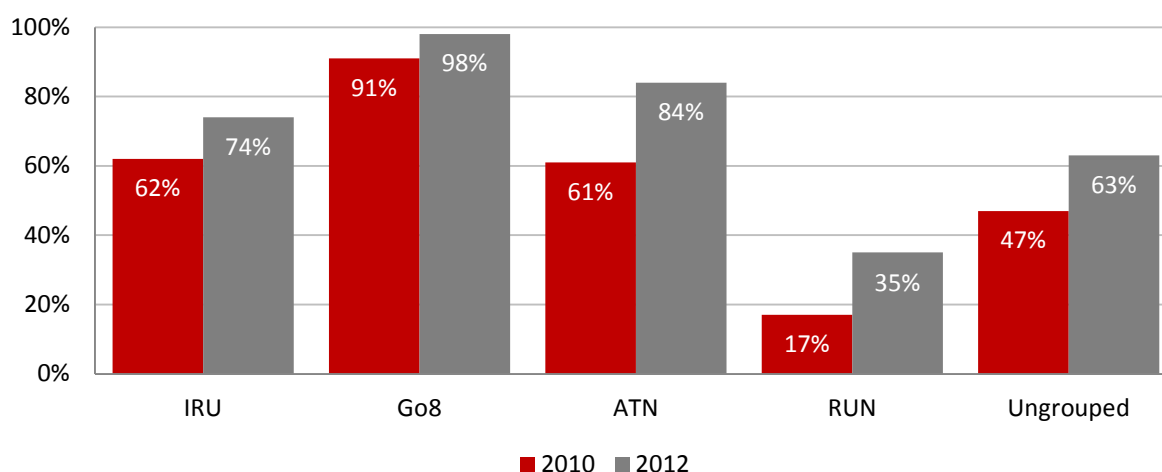


Chart 5 – ERA 2010 and 2012 Proportion of Ratings at 3 and above by Grouping.



With the stronger results for non-Go8 universities in ERA 2012, that groupings share of the higher ratings has fallen. In 2012 the Go8 received 67% of the 5s (down from 77%), 59% of 4s (down from 65%) and 30% of 3s (down from 37%). Note that the number of 4 and 5 ratings did increase for the Go8 but not by enough for the group to maintain its 2010 share.

Chart 6 – ERA 2010 and 2012 Grouping Share of Rating 5s.

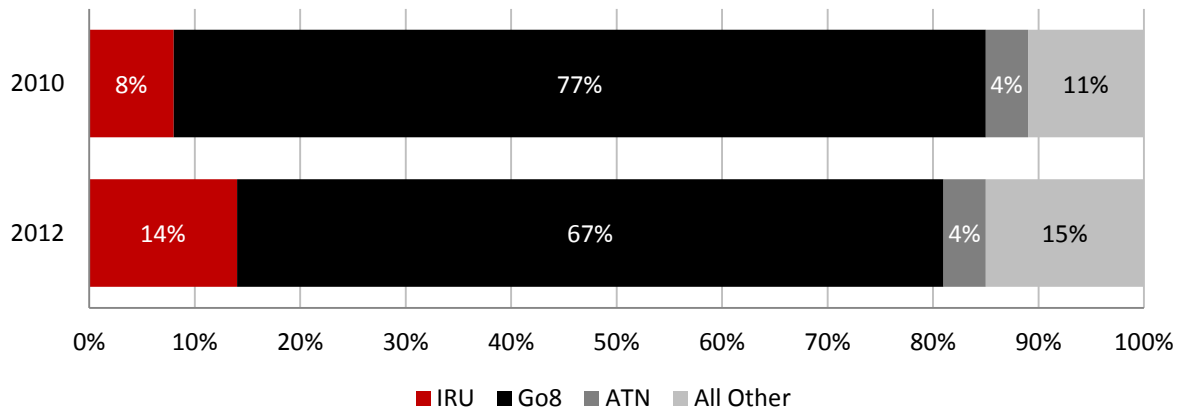


Chart 7 – ERA 2010 and 2012 Grouping Share of Rating 4s.

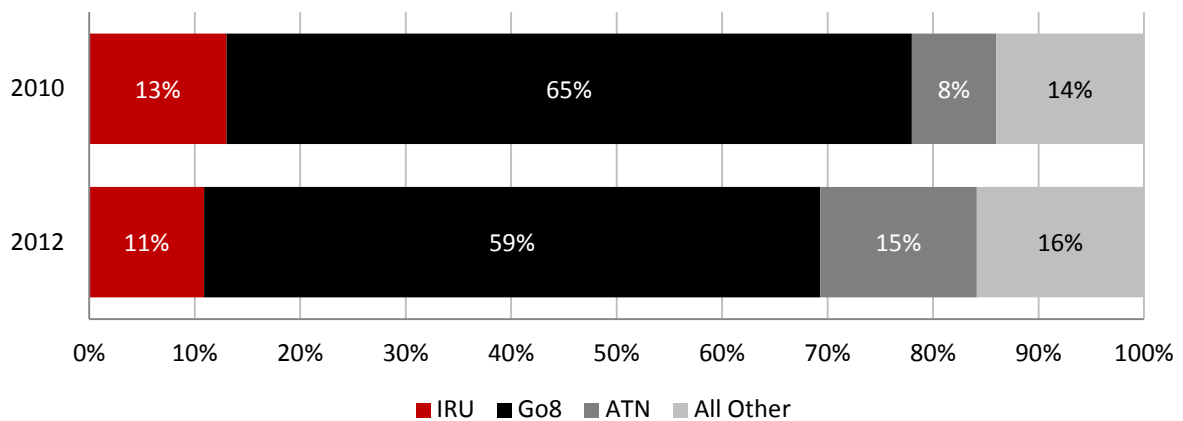
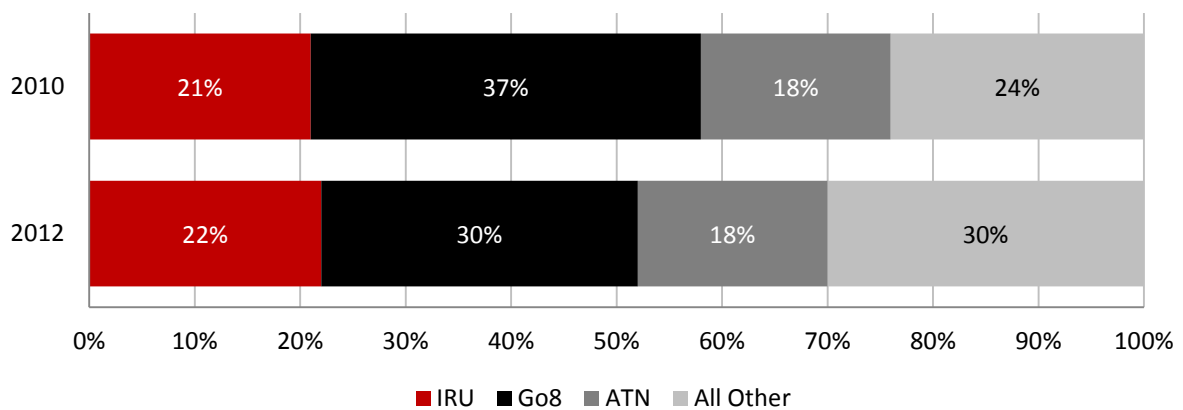


Chart 8 – ERA 2010 and 2012 Grouping Share of Rating 3s.



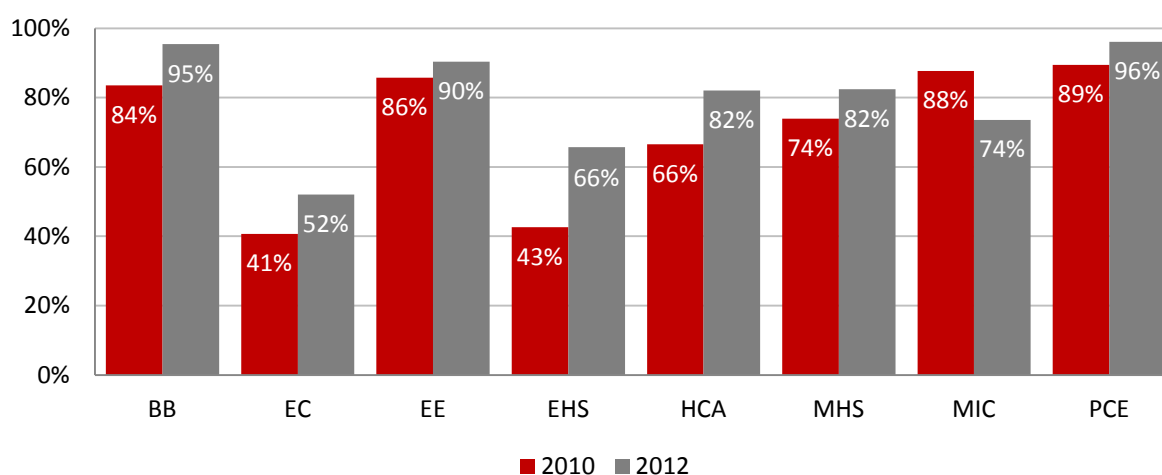
Outcomes by Cluster

Clusters used in ERA assessments are as follows:

BB	Biological and Biotechnological Sciences
EC	Economics and Commerce
EE	Engineering and Environmental Sciences
EHS	Education and Human Society
HCA	Humanities and Creative Arts
MHS	Medical and Health Sciences
MIC	Mathematical, Information and Computing Sciences
PCE	Physical, Chemical and Earth Sciences

Nationally, the largest number of assessments was in Humanities and Creative Arts (307) though there were substantially fewer assessments here than in 2010 (373). This is likely due to the increased assessment threshold for peer review and this also appears to have affected Education and Human Society (279 assessments to 210). The largest increase in assessments was for Mathematical, Information and Computing Sciences (from 81 to 155) though this cluster again had the lowest number of assessments overall.

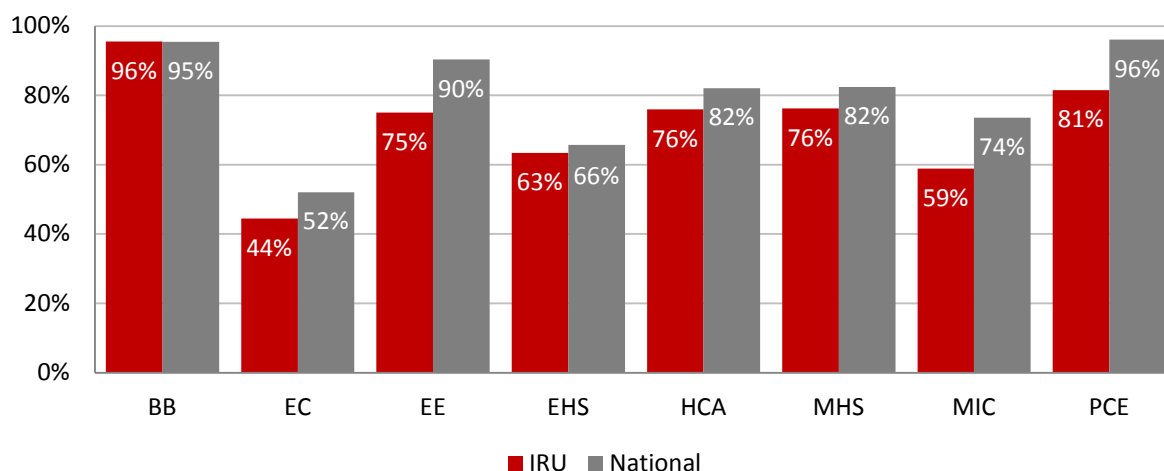
Chart 6 – ERA 2010 and 2012 Proportion of Ratings at 3 and above by Cluster.



All clusters saw more than half of all assessments rated as world standard or above. The proportion of assessments rated as world standard or above increased for all clusters with the exception of Mathematical, Information and Computing Sciences. Economics and Commerce again has the lowest proportion of assessments rated as world standard and above, and Physical, Chemical and Earth Sciences the highest.

For the IRU, the proportion of assessments rated as world standard or above was lower than the national average for all clusters, with the exception of Biological and Biotechnological Sciences, where it was slightly higher.

Chart 7 – ERA 2012 Proportion of Ratings at 3 and above by Cluster – IRU and National.

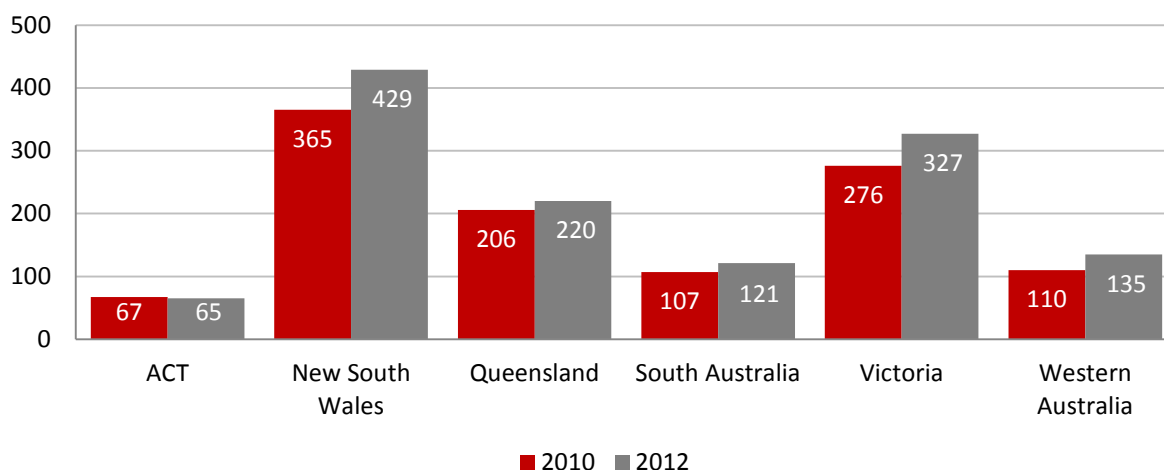


Outcomes by State

As in 2010 the largest number of assessments were undertaken for universities in New South Wales (505), followed by Victoria (399) and Queensland (298). The total number of assessments fell for all states with the exception of Queensland, where it increased slightly.

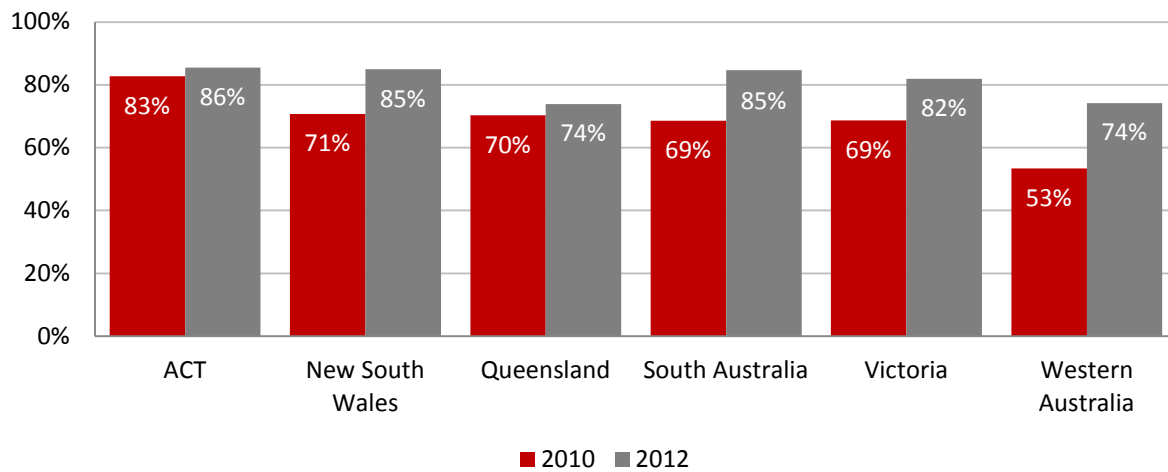
The proportion of assessments rated as world standard or above increased for all states, and particularly significantly in Western Australia (from 53% of the total to 74%) and South Australia (from 69% to 85%).

Chart 8 – ERA 2010 and 2012 Number of Ratings at 3 and above by State.



Note: Tasmania and the Northern Territory are excluded from the table above due to the small number of institutions and assessments in each. The multistate Australian Catholic University is also not included above.

Chart 9 – ERA 2010 and 2012 Proportion of Ratings at 3 and above by State.



Note: Tasmania and the Northern Territory are excluded from the table above due to the small number of institutions and assessments in each. The multistate Australian Catholic University is also not included above.

--

Grant Kennett
6 November 2012